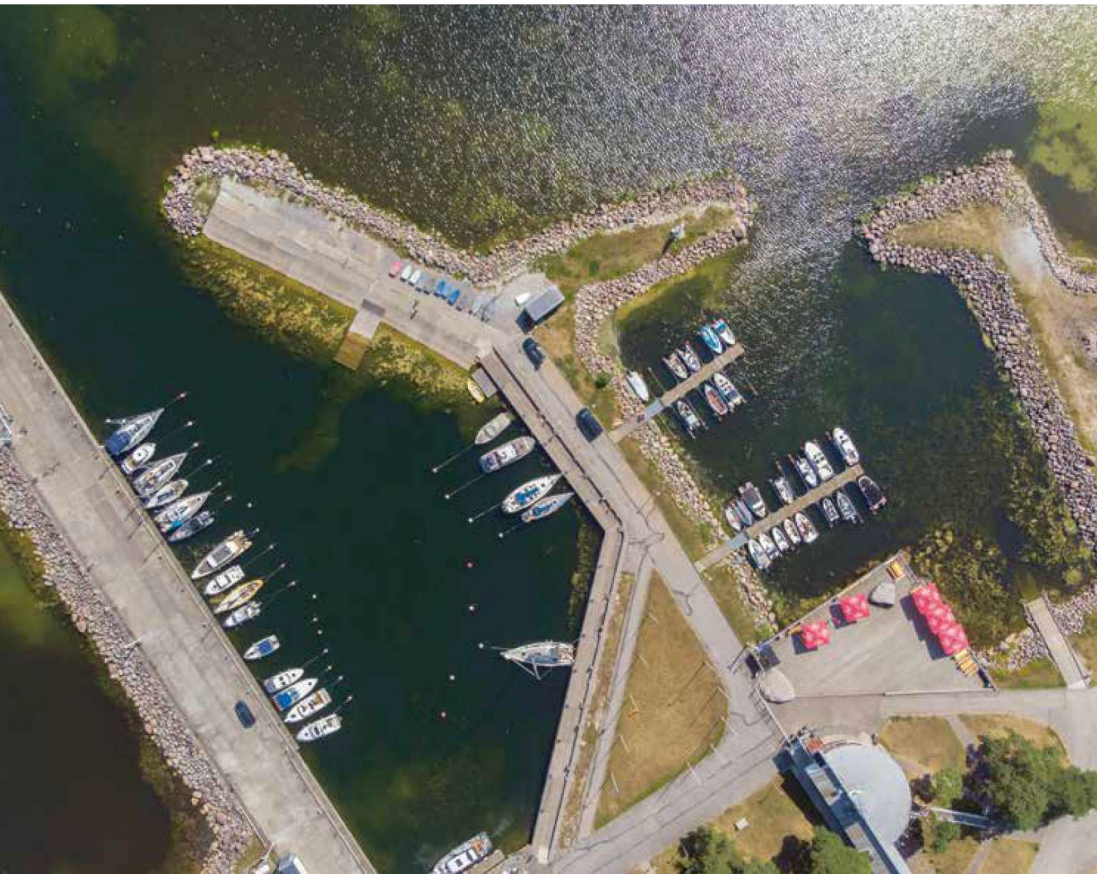




NORTH ESTONIA

54. LOHUSALU MARINA

Lohusalu 152/1
Lohusalu village
Harju county
+372 53409442
lohusalu@lohusalu.ee
www.lohusalu.ee
VHF 10 "Lohusalu marina"



ACCESS TO THE MARINA FROM THE SEA

From WP1 (59°24.40' N; 24°13.10' E) follow the leading line 233.3°-53.3° (Iso R 2 s - Iso R 4 s). The front beacon of the leading line is located at the tip of the breakwater (59°24.15' N; 24°12.39' E). Steer to starboard and then to the harbour.

59°24.20' N
24°12.60' E

Depth: 2.5 m
Max. LOA: 20 m
Max. width: 5 m
Number of berths: 15

The Lohusalu Marina is situated near Laulasmaa, which is well known for its beautiful beaches and spa centre.



3 km

55 km

Depths and heights measured in metres, in reference to mean sea level (BHS-77).

