



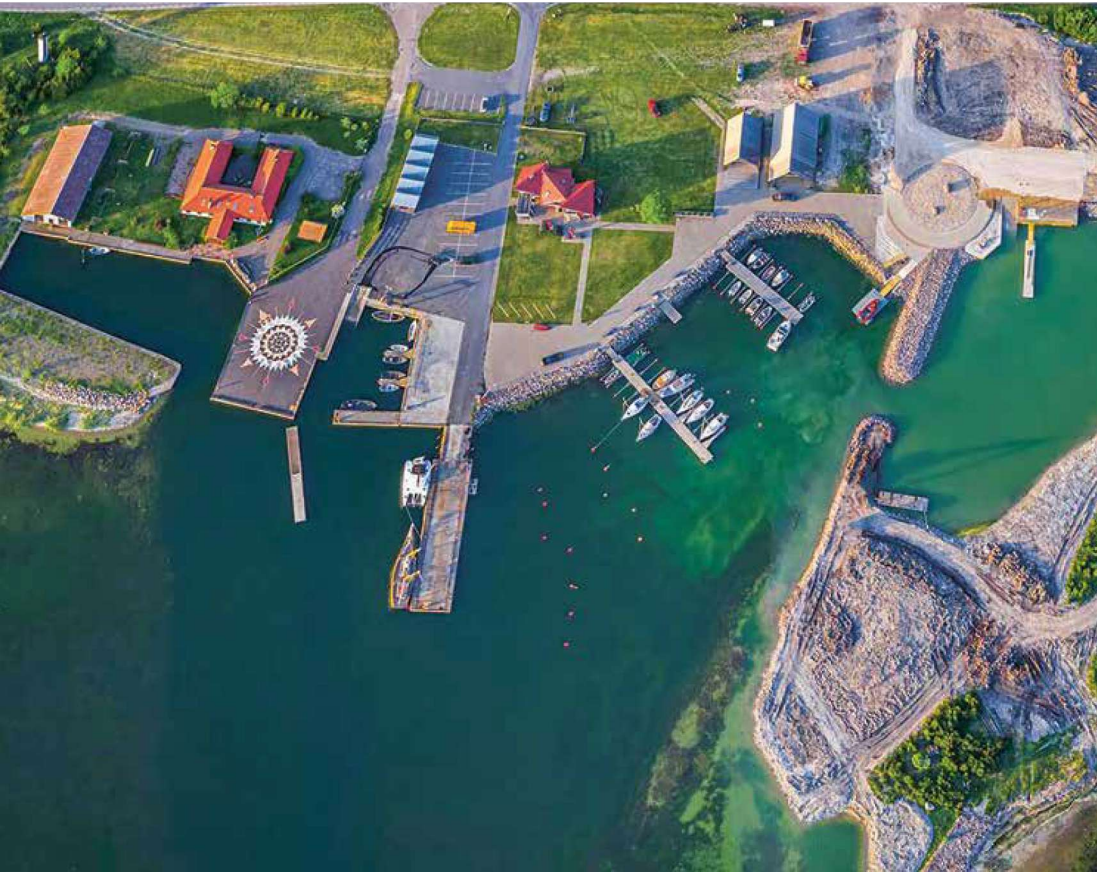
WESTERN ESTONIA AND ISLANDS

43. ORJAKU HARBOUR



Orjaku village
 Hiiumaa island
 +372 53455059
 sadamad@hiiumaa.ee
 sadamad.hiiumaa.ee

i Hiiu 1
 Kärkla, Hiiumaa
 www.hiiumaa.ee



ACCESS TO THE MARINA FROM THE SEA

Exposed to SW and W winds.
 Approach along the leading line 3.7°-183.7°. Fairway begins from Orjaku buoy "E" (58°43.71' N; 22°45.61' E). After WP1 (58°47.00' N; 22°46.22' E) follow 342.5°-162.5° (FI G 5 s - FI G 3 s) to WP2 (58°47.17' N; 22°46.10' E). Entry around east breakwater (FI G 5 s).

58°47'18.60" N
 22°46'15.00" E

Depth: 2.7 m
 Max. LOA: 24 m
 Max. width: 10 m
 Number of berths: 40

Orjaku is a fishing village located near a nature conservation area.



3.5 km

31 km

Depths and heights measured in metres, in reference to mean sea level (BHS-77).

